

The Forgotten, But Not Lost

A Guide To The Many Memorial Dedications Around Our School

Welcome to the Irvington High School campus! These two schools have many wonders to behold, from the famous rock that lies upon the hill leading up to the basin to Meszaros Field and Oley Track, the campus is a wide place filled with lots of history but also some mysteries.

In this walking tour, we will focus on the many memorials around and inside the school - markers and plaques dedicated to the memory of students, alumni, faculty and staff who have passed away.



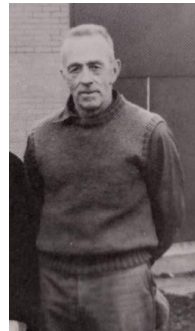
Our humble journey begins at the crest of the hill, as if you had just walked up from Broadway. As you look to your right (south) you will see three memorials.

1. The first of these is a faded, copper plate on a concrete block resting directly under a cherry tree, dedicated to **James Murray**. He was a custodian, pictured here in 1971.

(Numbers refer to the map at the end of this brochure)



2. A bit ahead and to the left of James Murraray, we now come upon a memorial to **Todd Bolduc** (1958-1973). He had gone to Dows Lane and was a Cub Scout. He is the young man on the left of the picture below.



3. To the left of the marker to Todd Bolduc is a significantly more faded inscription to **Jack Decker**, a custodian at Irvington High School beginning in at least 1967.

Our journey then takes us to the steps leading up to the atrium.

4. On your right/west against a gray cement wall, is a dedication for one **Kathleen S. Downey**.

She was a prominent member of the Board of Education as well as the Planning Committee in her 13 years of service. She was also a nurse before becoming a Board of Education member, and The Kathleen Downey



Scholarship is awarded to a deserving graduating senior intending to pursue a career in nursing.



Our next stop is across the crosswalk closest to the atrium. Before you finish crossing, look to the left (northwest) at a line of three ornamental trees.

5. Below the furthest tree, you will find a marker dedicated to **Michael R. Moretti Jr.** (1957-1974).

Before his unfortunate and early passing, he was the junior class president. In this 8th grade photo from the 1971 yearbook, he is the boy in the center.



6. Below the closest tree is a marker dedicated to **William Paul Jr.** (1948-1966), class of 1966. He died unexpectedly in April of 1966. In May of 1966, three trees, including one dedicated to him, were planted as memorials to students who had passed away.



At the end of the crosswalk, walk along the sidewalk, going north away from the school building.

7. To your right is an evergreen tree; on the side opposite the sidewalk, next to the parking lot, at the base of the tree, is a concrete marker with the nameplate missing.

8. Keep walking away from the building and you will come to a small tree on your right. The marker here, with the concrete chipped, is dedicated to **John Miscioccia.** He was appointed as a custodian in the district 1959.



9. Keep walking in the same direction, and on your left in the middle of the grass you will see a small tree with a marker at its base dedicated to **Robert Livingston.** In 1959 he was appointed as custodian, then in 1963 as head custodian. He is shown here in the 1971 Yearbook.



Return to the crosswalk, but instead of crossing back to the Atrium, turn left along the road (watch for vehicles!).

10. Just as you turn left you should see the first of three markers. It lies alone on the grass with no tree near it, and there is no longer a nameplate on it.

Continue up the road and before you arrive at the next crosswalk you will see a tree on your left with a marker at its base.

11.



Kevin F. Carney (1942-1960) was the son of Dr. Edward M. Carney, Jr., a dentist who also served on the Board of Education.

Kevin was a popular student. He was active in athletics, due to him being the quarterback of the football team as well as playing basketball, baseball, and tennis.

The death of Kevin Carney is a pelicular story. There was a rivalry between Ithaca College, the college Kevin went to, and Cortland College. It was tradition before the annual football game to play pranks on the other school. In this instance, Cortland had just pranked Ithaca and Kevin and his friends were on their way to prank them back. On the way there, the pickup truck they were all riding in flipped over, and Kevin died in the accident.

Does the name Carney sound familiar?



Kevin was a nephew of Art Carney, who played Ed Norton on *The Honeymooners*, a popular sitcom from the 1950s. Some Irvington residents still recall Art

Carney driving down Main Street and waving to everyone.

12. Continue along the roadway and you will see on your left another concrete marker without a nameplate. It is possible that this missing plaque and the others fell off, were stolen, or simply lost.

One of the markers without a name probably was dedicated to **Robert**



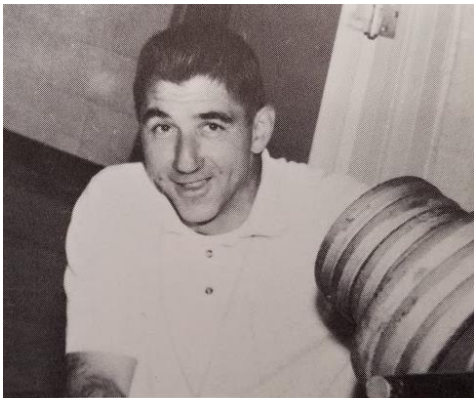
Byrne (1951-1966), class of 1969, pictured here in 9th grade in 1965. He was 15 years old when he passed away. One of three memorial trees was dedicated to him in 1966.

Follow the crosswalk toward the track and field for our next stop.



13. At the end of the crosswalk is a giant rock with a dedication to **Harold F. Meszaros**. The field there is also named after him. An Irvington graduate himself, he became a teacher of physical education, health and science. He was the first ever Director Of Athletics at Irvington. Generally considered a popular figure during his tenure, his sudden death in 1977 sent shocks through the community, which is most likely why the field was named after him and the Rock cleaned up and dedicated.

Fun fact: Before it was dedicated in 1977, the Meszaros Rock was often painted, just like the "The Rock" on the hill leading up to the school.



Mr. Harold F. Meszaros, B.S. Ithaca College, Physical Education.

To continue the tour, cross at the crosswalk that leads to the buildings.

14. In between the Middle School and the High School is a flagpole, close to the Middle School entrance. At first glance, it does not look like a standard dedication or marker. However, upon closer inspection, it can be seen that the flagpole is a memorial

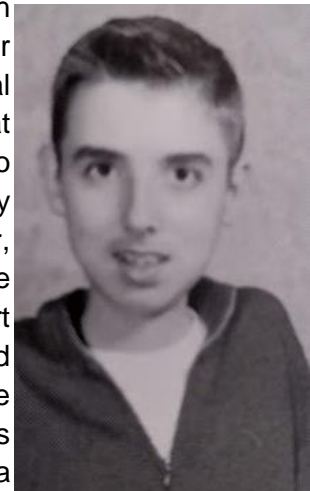


dedicated to **Billy Starr** (1988-2008). Often looked upon as a great and versatile student due to his involvement in both football and being in the school theatrical productions, he died in a car crash when he was a junior at Towson University.

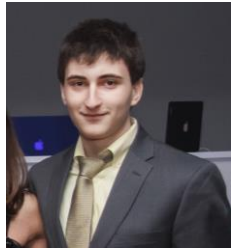
Go south/straight between the two buildings towards the wide open space called the Quad, and then make a right and go west down the stairs to the Lower Quad, where there are two more dedications.

15. The first of these is a small plaque on a picnic table north side of the Lower Quad, under the maple trees, and it is dedicated to **Anthony Lubina** (1988-2008).

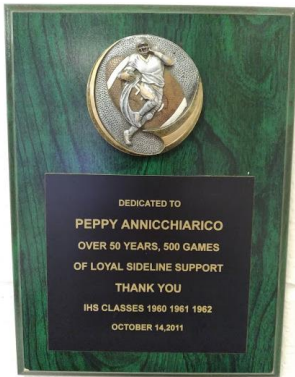
He was born with Duchenne muscular dystrophy, a terminal illness with no cure that caused his lifespan to be drastically shortened. However, he was able to make the most of his short life, and was beloved by all in his short time here, although he was confined to a wheelchair.



16. On a red bench in the same area, slightly to the south, lies a plaque dedicated to **Tyler Rosenberg**. He was a senior in high school, who played on the baseball team and demonstrated “a rich imagination, who from an early age was able to cre-ate his own en-ter-tain-ment”. On a visit to a waterfall during a family vacation in Vermont, he slipped and plunged down 50 feet, where he sustained mortal injuries.



Now backtracking up the stairs, enter the building and go to the Library entrance.



17. To the left of the double doors outside the library, is a plaque dedicated to **Charlie “Peppy” Annicchiarico**.

A cousin of an Irvington Bulldogs football team member who played

in the mid-1950s, Peppy came to cheer him on, and then kept attending, not missing a game for over 50 years. He would run up and down the sideline, cheering the Bulldogs on. The Principal, tired of chasing him away from the field, eventually gave him a pass to allow him close access to the field. He became accepted as the “manager” by successive coaches, and played that role well into his 80s.

For our final stop of this tour, head to the other end of the hallway until you just about exit at the main entrance/exit, but then turn left to face the double doors that lead to the art wing.

18. You will see a plaque hanging on the wall dedicated to **Nick Gulli** (1934-2005), class 1952. Unlike many of the people with markers here who died before their time, Nick Gulli lived a full life. Born in Italy, his family moved to Irvington, In 1950 he was the junior class president. After graduation in 1952, he graduated with a civil engineering degree from Northeastern University in Boston and became a math teacher in Massachusetts before he retired to Ludlow, Vermont.



We hope you have enjoyed this tour of Memorial Markers on the Irvington HS-MS campus. Many of the memorials are old, worn down, and sorely need attention. These were people who lived good lives, and it is important to remember them. We hope that this brochure has done its part to keep their memories alive and makes you more curious about the local history of Irvington.

Researched and created by:
Jabari Domingo

Advisor: Dr. Weiselberg

Spring 2021

